

REVISIONS	BY

NOT FOR CONSTRUCTION

J.URCIAGA DESIGN
40028 PALMETTO DR.
PALMDALE, CA 93551
T. (818) 689-6159
E. URCIAGA.JESUS@GMAIL.COM



AIR HOLLYWOOD
AIR HOLLYWOOD FACILITIES
WWW.AIRHOLLYWOOD.COM
13238 WEIDNER ST.
LOS ANGELES, CA. 91301

THE DRAWING AND THE INFORMATION CONTAINED HEREIN ARE THE COPYRIGHTED WORK OF JURCIAGA DESIGN AND MAY NOT BE REPRODUCED WITHOUT WRITTEN PERMISSION

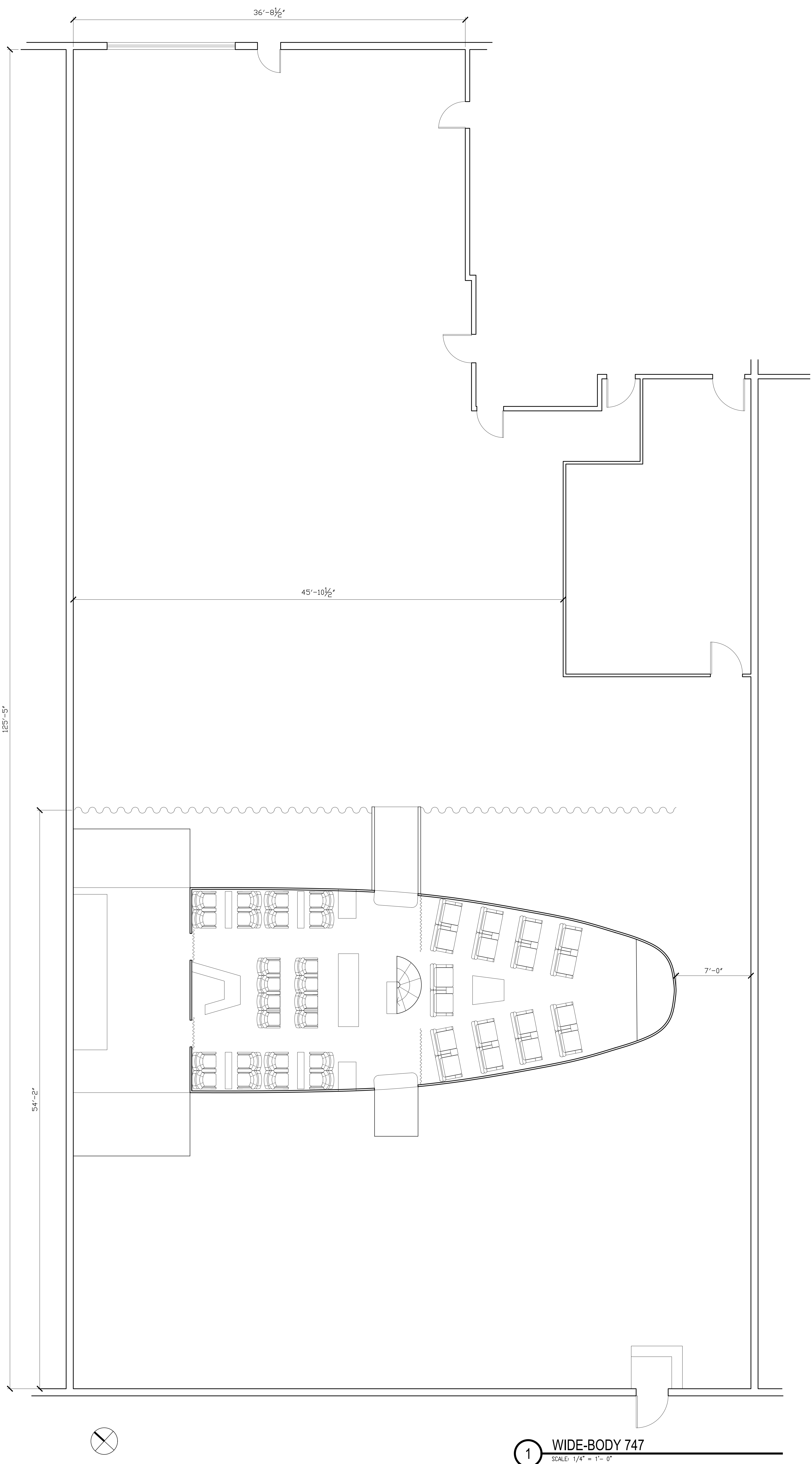
BASE FILE NAMES
DRAWN BY _____ JU
CHECKED BY _____ JU
SCALE AS NOTED
DATE 11/30/17
PROJECT NO. _____

WIDE-BODY 747

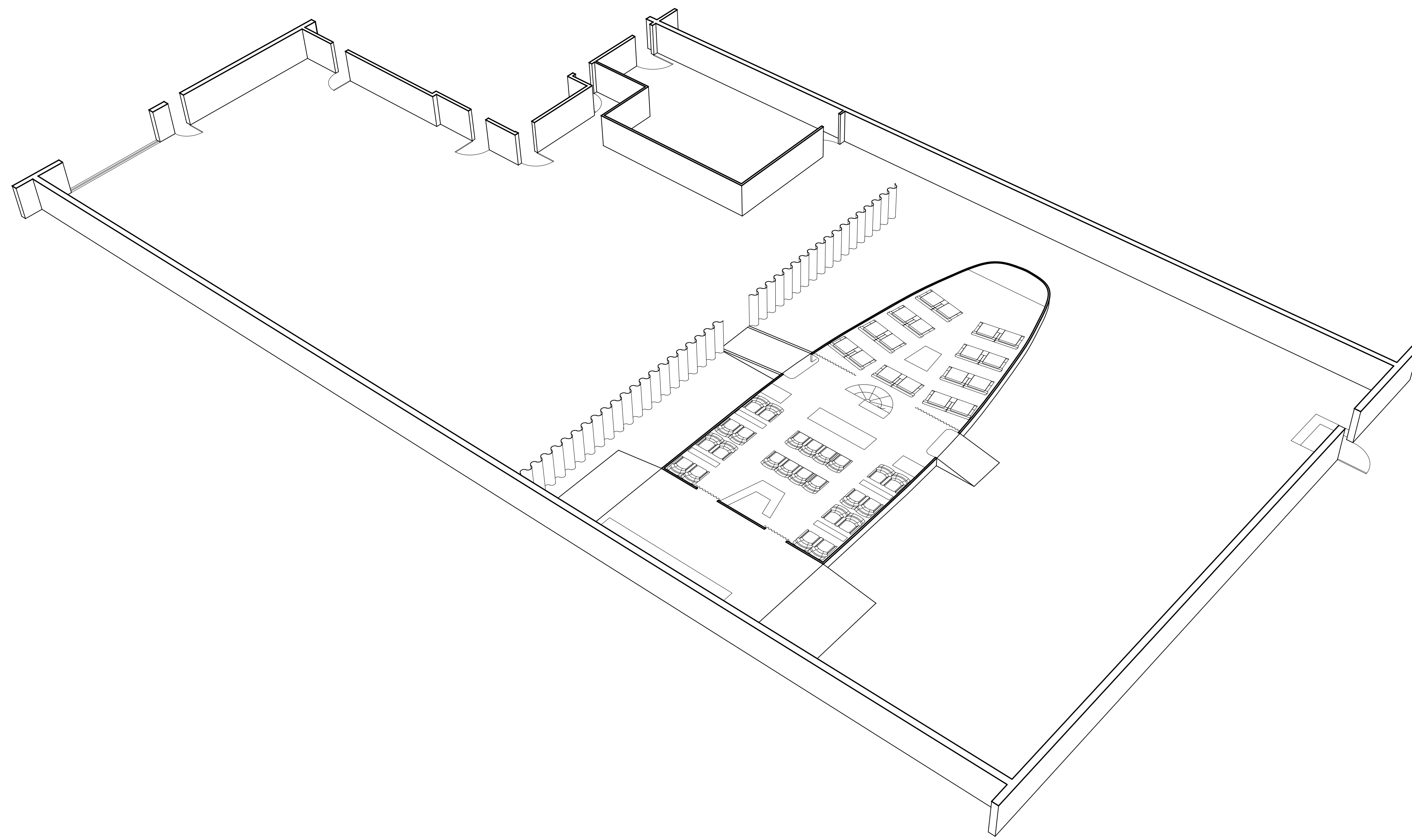
SHEET TITLE

A2.0

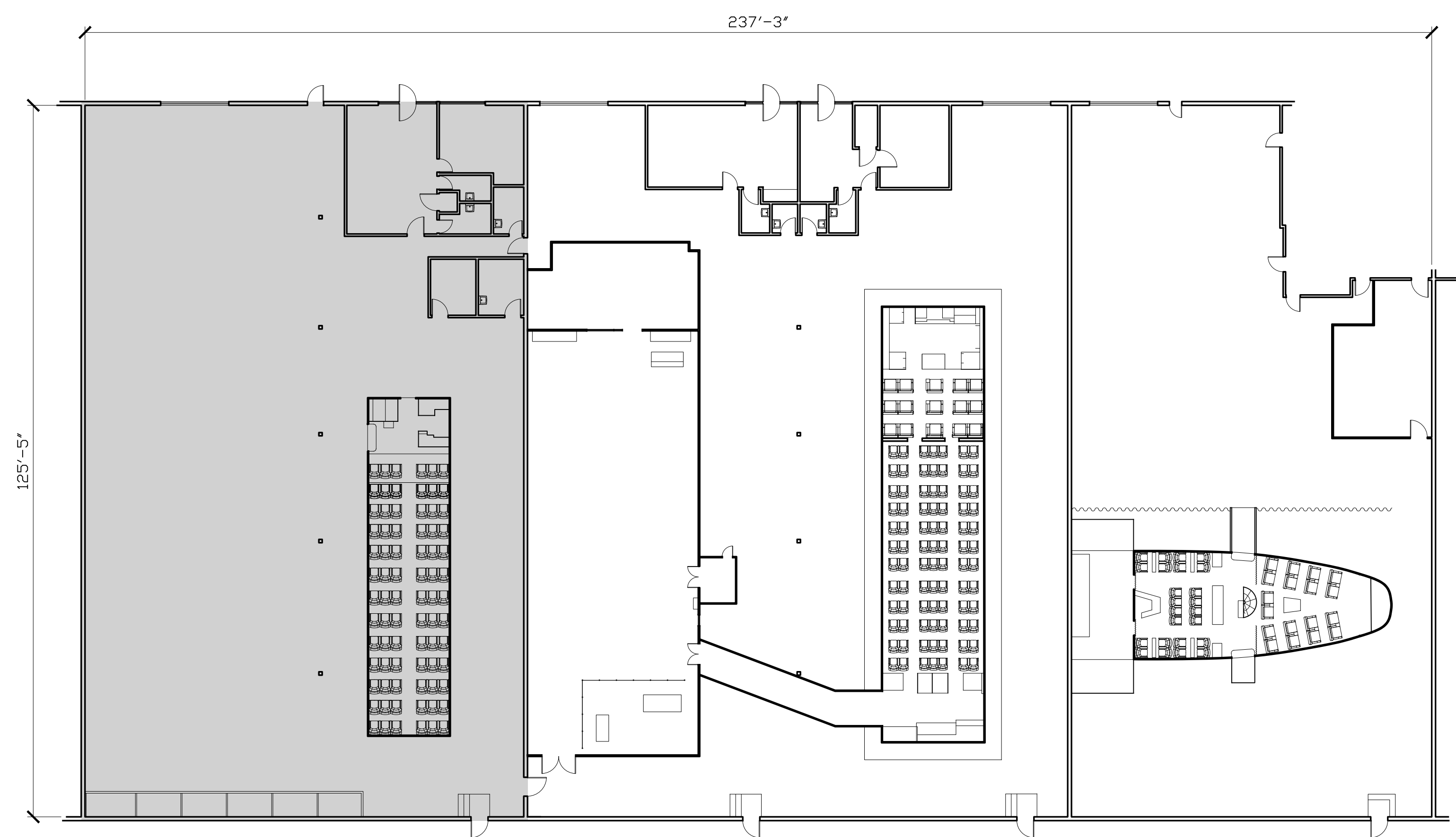
SHEET NO.



1 WIDE-BODY 747
SCALE: 1/4" = 1'-0"



3 AXON
SCALE: NTS



2 KEY PLAN/OVERALL PLAN
SCALE: 1/16" = 1'-0"

REVISIONS	BY

NOT FOR CONSTRUCTION

J.URCIAGA DESIGN
40028 PALMETTO DR.
PALMDALE, CA 93551
T. (818) 689-6159
E. URCIAGA.JESUS@GMAIL.COM



AIR HOLLYWOOD
AIR HOLLYWOOD FACILITIES
WWW.AIRHOLLYWOOD.COM
13238 WEIDNER ST.
LOS ANGELES, CA. 91301

THE DRAWING AND THE INFORMATION CONTAINED HEREIN ARE THE COPYRIGHTED WORK OF JURCIAGA DESIGN AND MAY NOT BE REPRODUCED WITHOUT WRITTEN PERMISSION

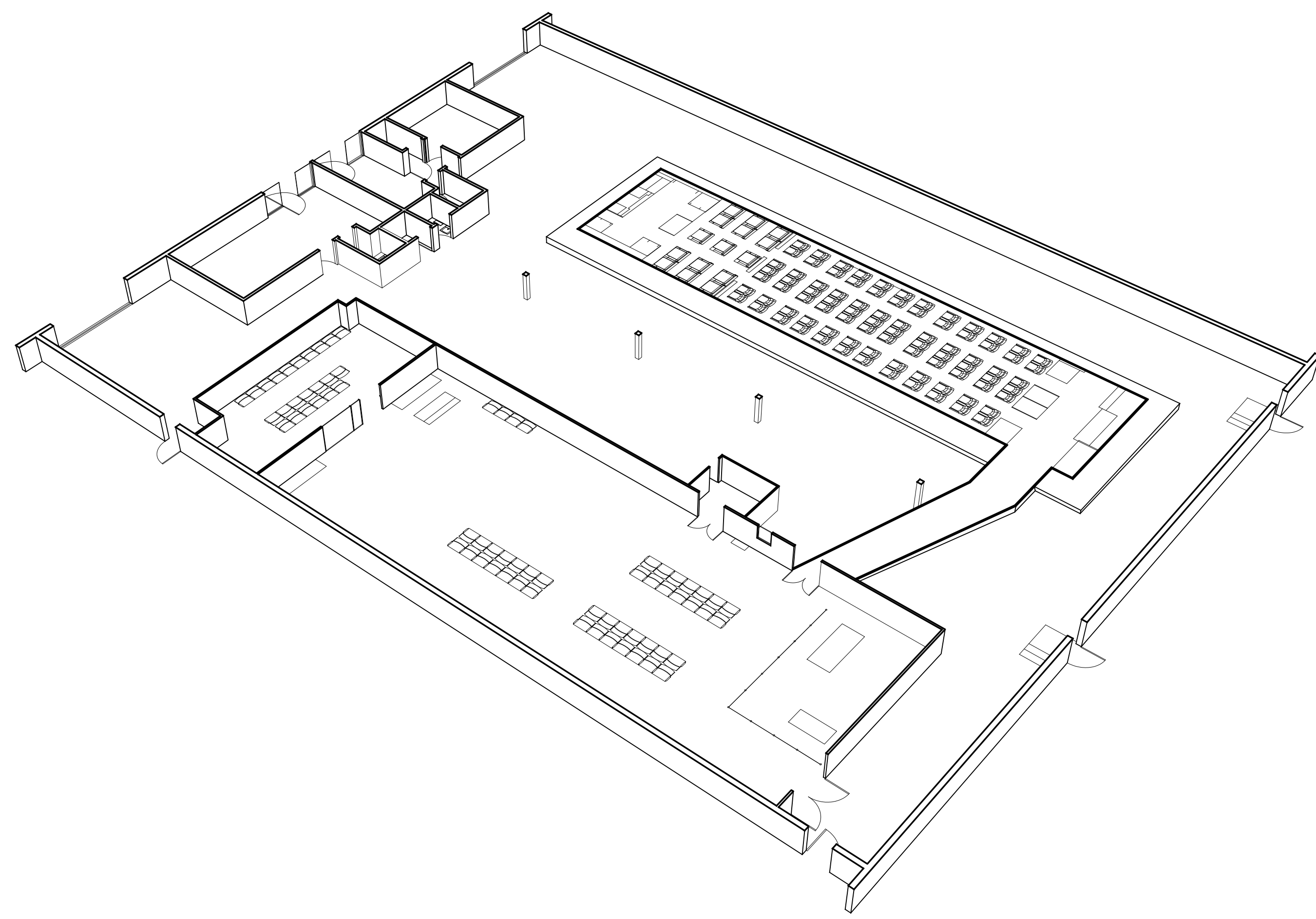
BASE FILE NAMES
DRAWN BY _____ JU
CHECKED BY _____ JU
SCALE _____ AS NOTED
DATE _____ 11/30/17
PROJECT NO. _____

NARROW-BODY 757

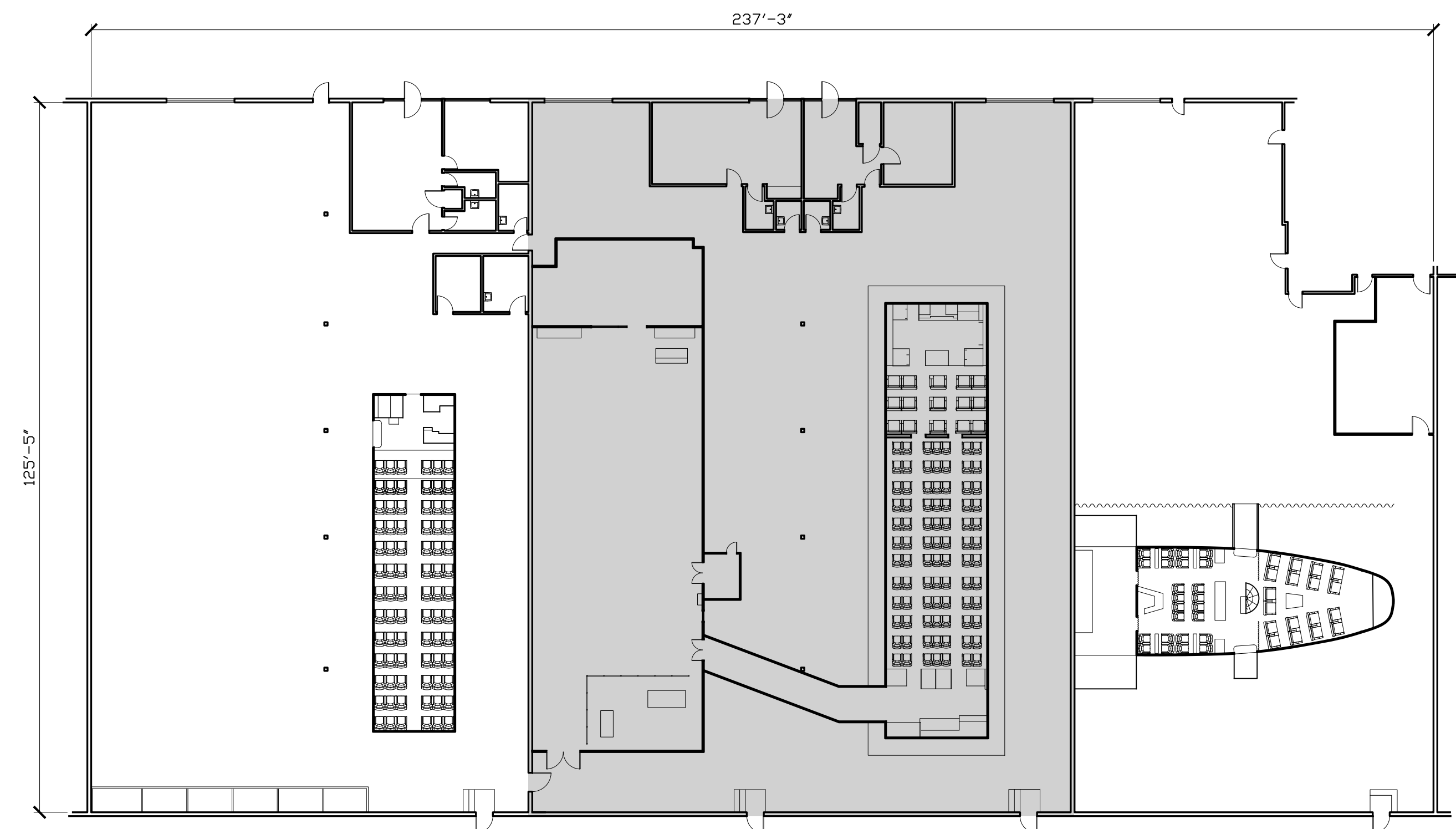
SHEET TITLE

A2.1

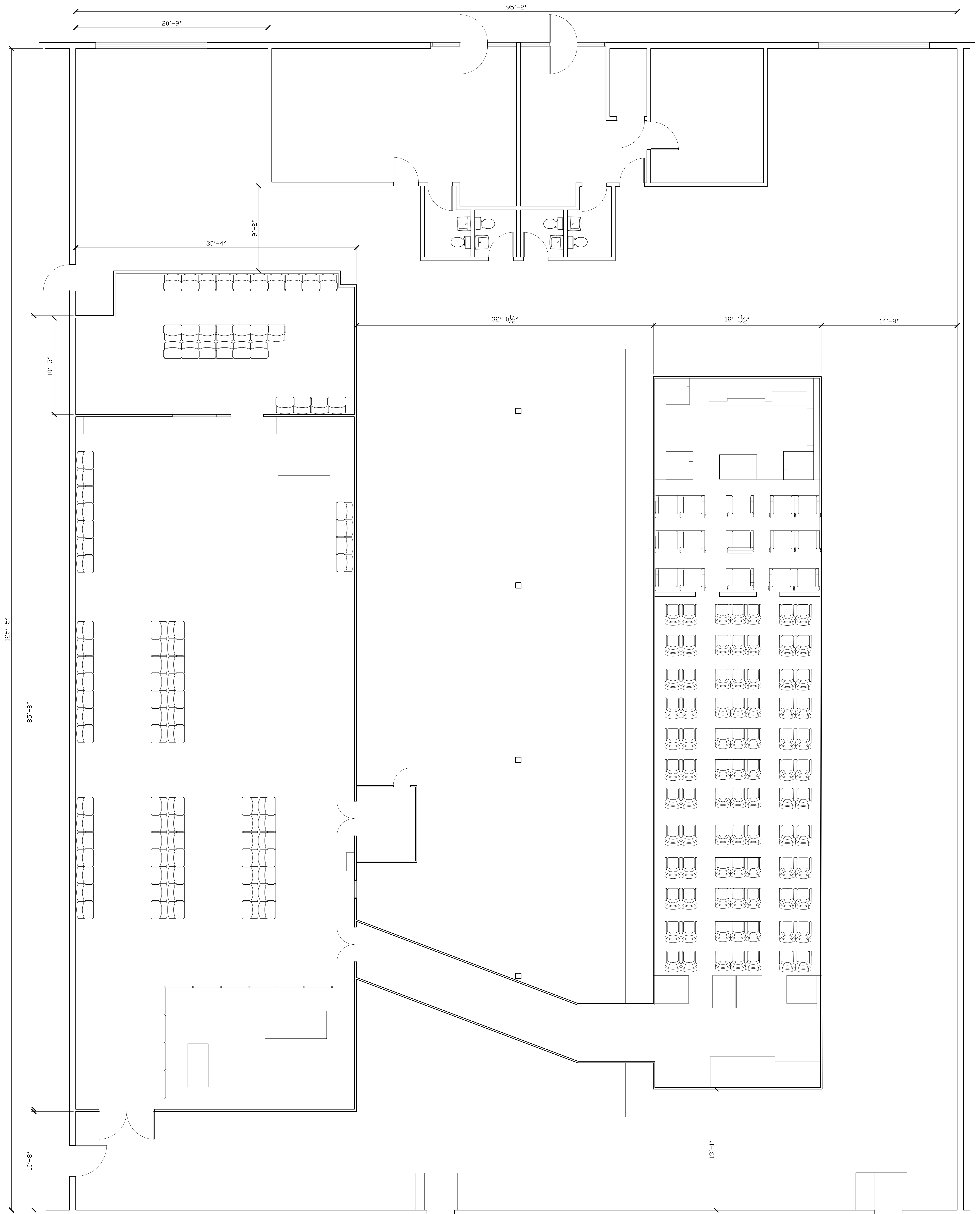
SHEET NO.



3 AXON
SCALE: NTS



2 KEY PLAN/OVERALL PLAN
SCALE: 1/16" = 1'-0"



1 NARROW-BODY 757
SCALE: 1/4" = 1'-0"

REVISIONS	BY

NOT FOR CONSTRUCTION

J.URCIAGA DESIGN
40028 PALMETTO DR.
PALMDALE, CA 93551
T. (818) 689-6159
E. URCIAGA.JESUS@GMAIL.COM



AIR HOLLYWOOD
AIR HOLLYWOOD FACILITIES
WWW.AIRHOLLYWOOD.COM
13238 WEIDNER ST.
LOS ANGELES, CA. 91301

THE DRAWING AND THE INFORMATION CONTAINED HEREIN ARE THE COPYRIGHTED WORK OF JURCIAGA DESIGN AND MAY NOT BE REPRODUCED WITHOUT WRITTEN PERMISSION

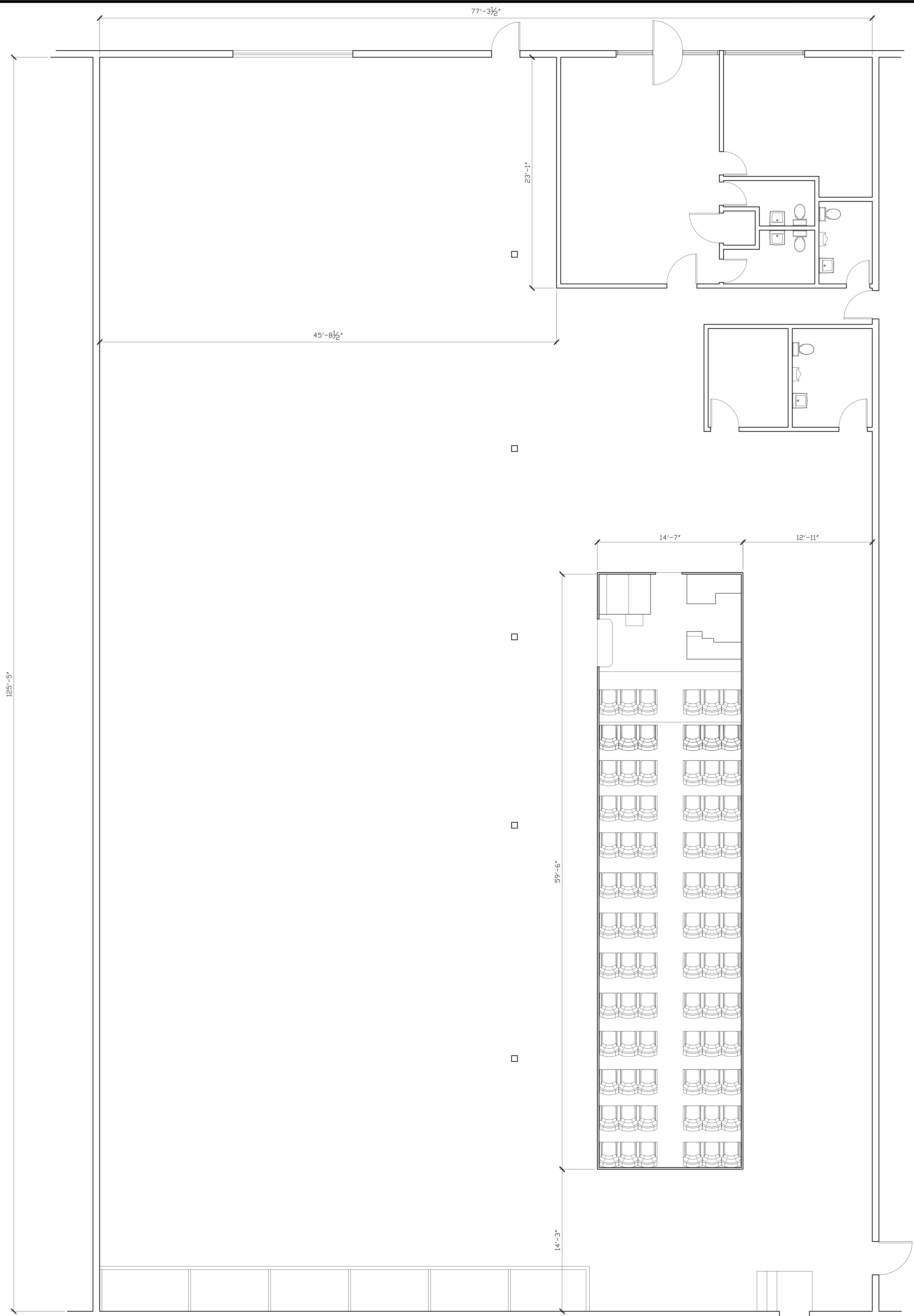
BASE FILE NAMES
DRAWN BY _____ JU
CHECKED BY _____ JU
SCALE _____ AS NOTED
DATE _____ 11/30/17
PROJECT NO. _____

NARROW-BODY 737

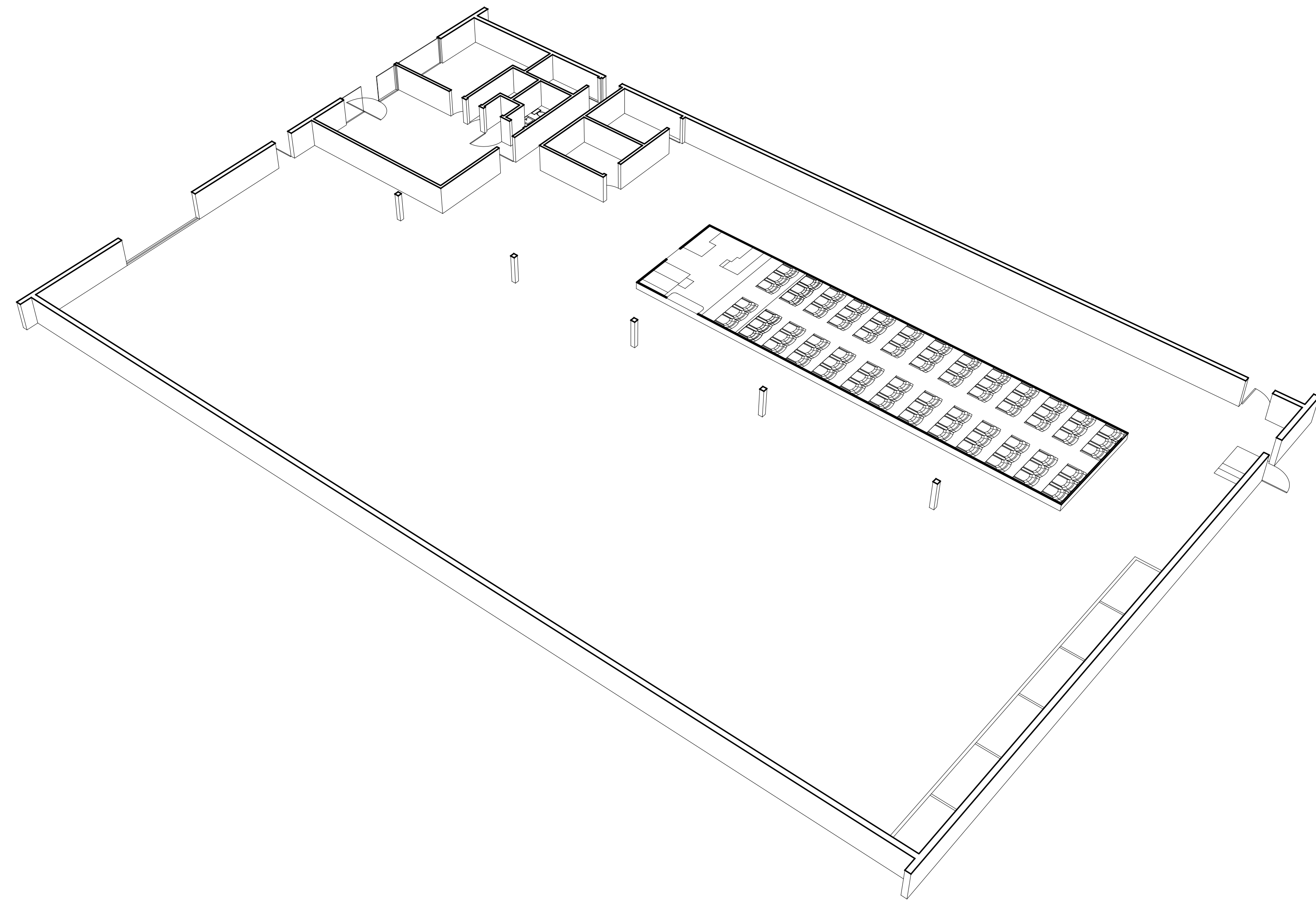
SHEET TITLE

A2.2

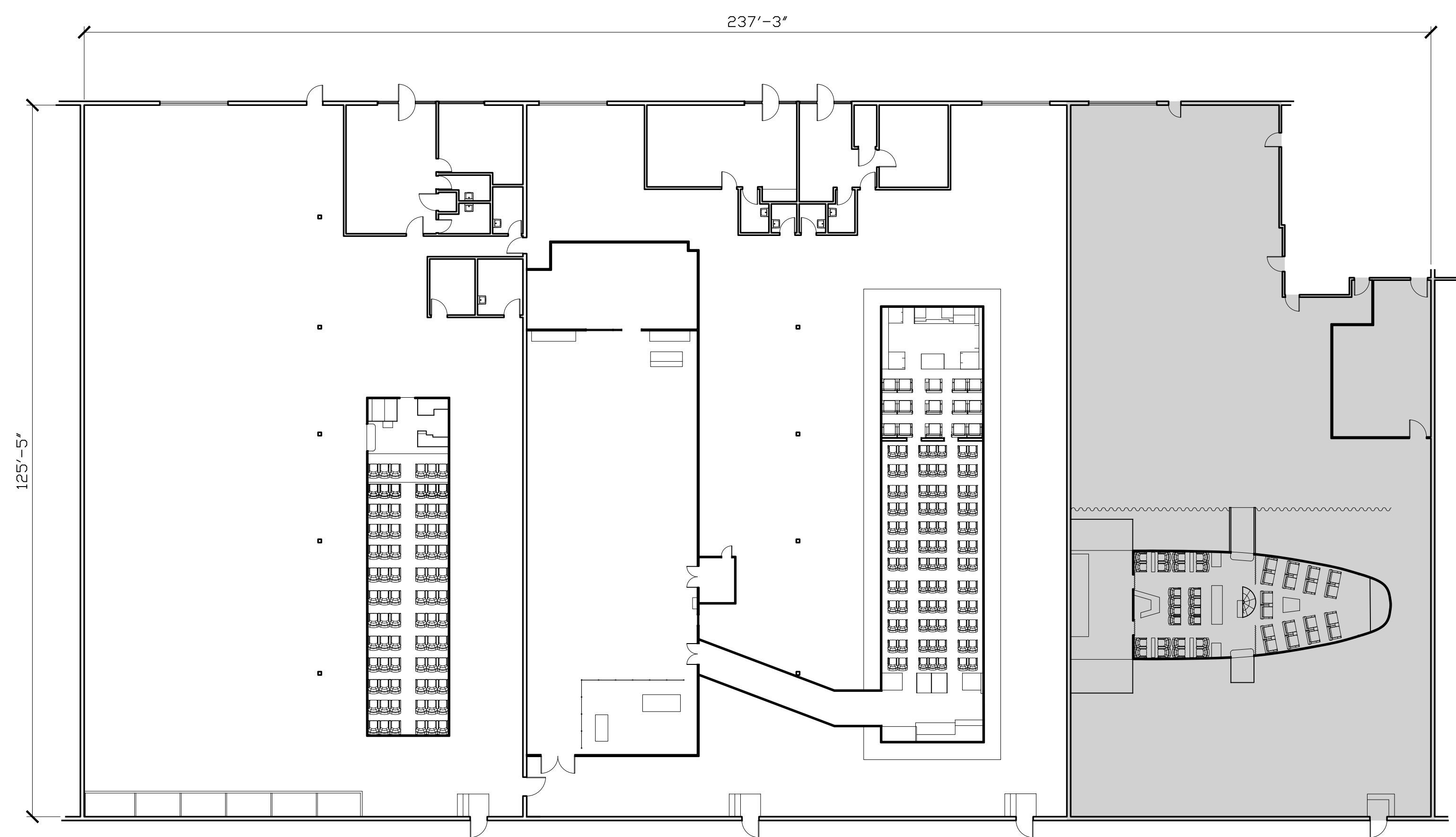
SHEET NO.



1 NARROW-BODY 737
SCALE: 1/4" = 1'-0"



3 AXON
SCALE: NTS



2 KEY PLAN/OVERALL PLAN
SCALE: 1/16" = 1'-0"